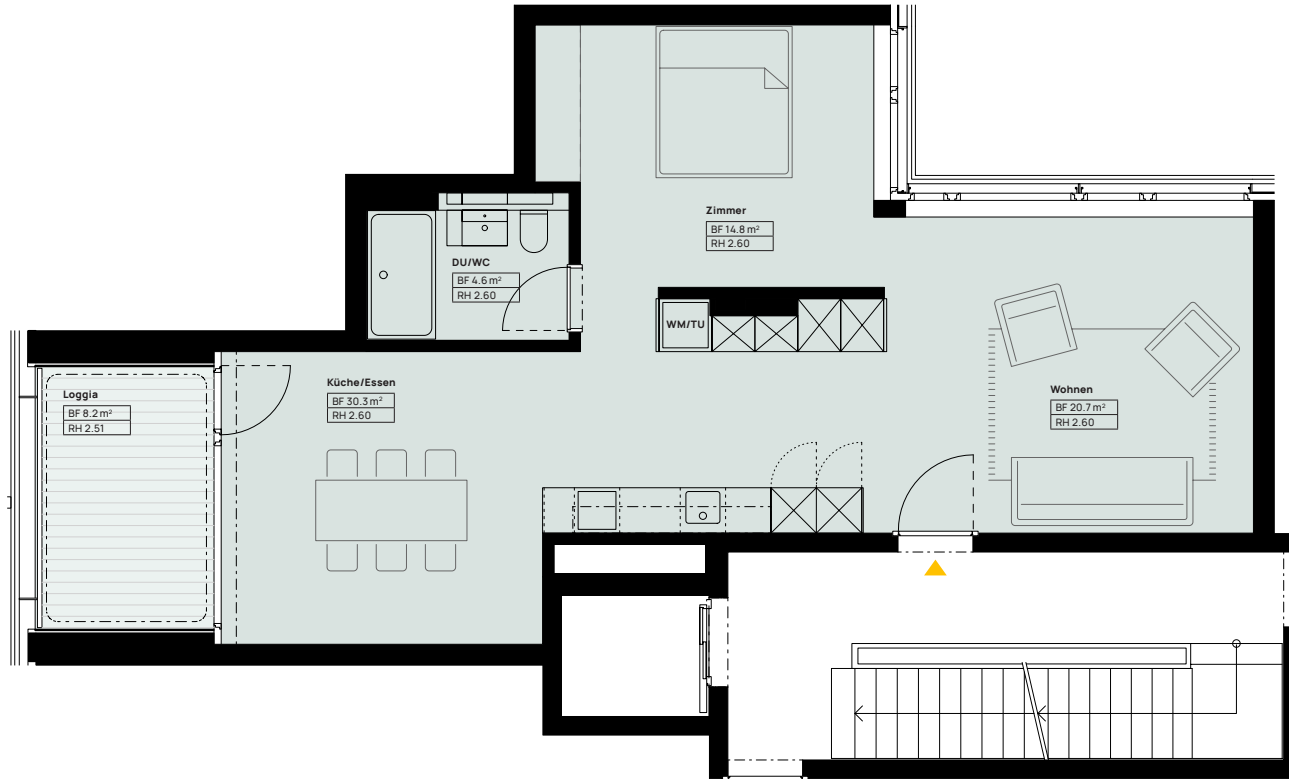




Massstab 1:100



# gira sole

## HAUS B WHG-NR. B52

|                 |                    |
|-----------------|--------------------|
| Grösse          | 2.5 Zimmer         |
| Nettowohnfläche | 70 m <sup>2</sup>  |
| Loggia          | 8.2 m <sup>2</sup> |
| Geschoss        | 5. Obergeschoss    |

